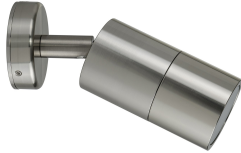




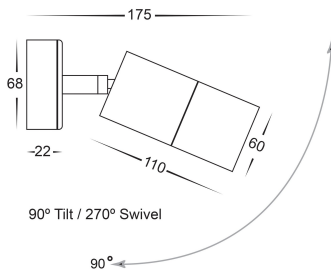
- Aluminium



- Stainless Steel 316



- Solid Copper



RZG35WLA

Wall Pillar Adjustable Light With Aluminium GU10 Max.35W/MR16 Max.20W 220VAC D60 IP65 With Pole Mounting

RZG35WLS

Wall Pillar Adjustable Light With Stainless Steel 316 Body, Anti-Corrosion GU10 Max.35W/MR16 Max.20W 220VAC D60 IP65 With Pole Mounting

RZG35WLC

Wall Pillar Adjustable Light With Solid Copper Body, Anti-Corrosion GU10 Max.35W/MR16 Max.20W 220VAC D60 IP65 With Pole Mounting

Description

Outdoor floodlight designed to use LED lamps and a spot optic. Consists of an optical assembly and a base.

Housing, hinge and mounting plate: corrosion-resistant Aluminium/ Stainless steel 316/ Solid Copper. Optimised surface for reduced accumulation of dirt. 90° tilt. Mounting plate rotatable through 350°.

Luminaire head with transparent toughened non-reflective glass, resist the impact and friction.

Control gear: 1 cable entries. [2] 3-pole terminal block.

LED module: Led GU10 or MR16.

Protection mode IP65: dust-proof and water jet-proof.



Technical data

Light source	LED GU10 Max.35W		MR16 Max.20W
System Wattage	-		
Luminous flux	-		
Number of led lamp	-		
Luminous efficiency	-		
Colour Temperature	-		
Colour Rendering Index	-		
Colour Deviation	-		
Beam Angle	-		
Rotation Angle	90° Tilt		270° Swivel
Anti-glare Rating	-		
Service Lifetime	-		
Ingress Protection	IP65		
Operation Voltage	220VAC, 50Hz		12V
Operation Temperature	-30°C ~ 50°C		
Frame	Aluminium		Stainless Steel 316 Solid Copper
Finishing	Non-Color, Matt Black or Option		
Lighting control (option)	Dali, 0-10V, Triac, Wireless		

Accessories

-

Notes

-

