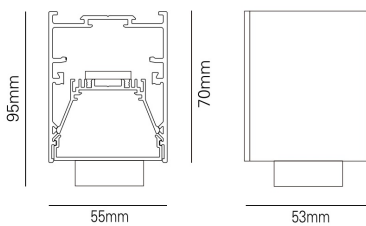
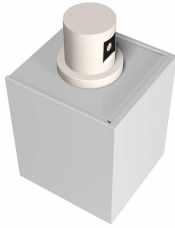


RZ5570-DND

Constant illuminance photosensitive module, rated power 400W, 0~10V dimming, 1%~100% dimming range, constant illuminance 100lux ~ 800lux



Description

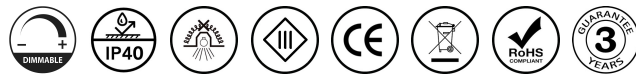
Linear direct and indirect light luminaire with housing made of anodised aluminium profile with matt or textured paint finish.

The constant value (lux) of illuminance could be adjusted freely to satisfy different requests.

Lighting fixtures are adjusted automatically according to constant illuminance value.

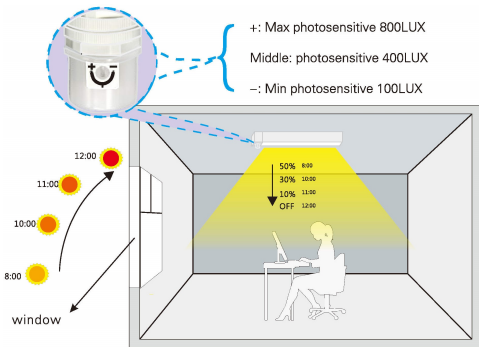
Compatible to lighting fixture with 0-10V dimming function. Expand connection with Linear Light according to your needs with dimming and photosensitive module.

Suspension and connection accessories available can be optionally sold separately.



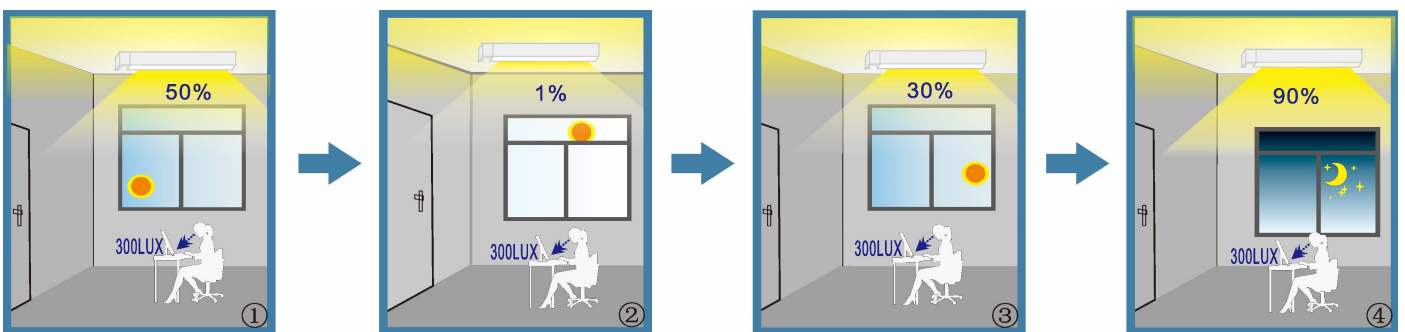
Technical data

Rated power	400W
Detection radius	-
Max installation height	-
Detection angle	180°
constant illuminance range	100 lux ~ 800 lux
Detection sensitivity	-
Hold time	-
Daylight sensor	-
Stand-by period	-
Stand-by dimming level	-
Dimming range	1-100% with 0-10V Dimming Port
Ingress Protection	IP40
Operation Voltage	220-240VAC, 50Hz
Operation Temperature	-20°C ~ 45°C
Frame	Aluminum
Installation way	Attach to lighting fixture or install separately
Finishing	Silver, Matt White, Matt Black



Photosensitive value is the value of sensor position, photosensitive value need to be adjusted accordingly to different position: when the actual illuminance is lower than setting value, lighting fixture would work by Max power; when the actual illuminance is higher than setting value, lighting fixture would work by Min power or turn off.

Automation Effect



Brightness in the Morning

Brightness in the Noon

Brightness at Nightfall

Brightness in the Evening

Connect to 1-10V dimming port to use internal photocell to detect ambient lux and adjust proper artificial light automatically which is in need.