



RZ30HBE

UFO Explosion Proof Highbay Light With Die Casting Aluminum Body and Frame Corrosion Resistant Led 30W 4200lm CRI80 220VAC 150.000h IP66 IK08

RZ50HBE

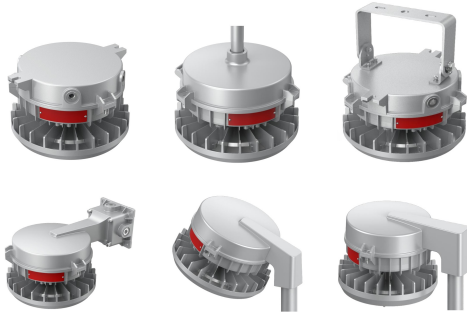
UFO Explosion Proof Highbay Light With Die Casting Aluminum Body and Frame Corrosion Resistant Led 50W 7000lm CRI80 220VAC 150.000h IP66 IK08

RZ75HBE

UFO Explosion Proof Highbay Light With Die Casting Aluminum Body and Frame Corrosion Resistant Led 75W 10500lm CRI80 220VAC 150.000h IP66 IK08

RZ100HBE

UFO Explosion Proof Highbay Light With Die Casting Aluminum Body and Frame Corrosion Resistant Led 100W 14000lm CRI80 220VAC 150.000h IP66 IK08



Description

Certified explosion-proof light, which is suitable for gas Zone 2 (international and European explosion-proof "Zone 2") and dust Zone 21 (International and European explosion-proof "Zone 21").

Housing: Equipped with low copper aluminum alloy body and special powder coating, as well as stainless steel components with special anticorrosion treatment, all those anti-corrosion aspects make it suitable for marine environments for over 10 years.

The Led shell adopts optical polar PC materials, which ensures the light even, high transmittance. Instant start, no flickering, no humming, no hazardous material. LED chips are separated from the driver cavity, ensures good heat dissipation and longer service life.

Easy wiring with self-locking spring terminals. Cover on driverbox is designed anti-dislodging.

Dimming driver can be optionally sold separately: Dali, 0-10V, Triac, Wireless, Microwave motion sensor and Emergency.

IP66 and IK08 double protection, with super reliability, waterproof, dustproof, antivibration performance.



Technical data

Light source	LED SMD			
System Wattage	30W	50W	75W	100W
Luminous flux	4200lm	7000lm	10500lm	14000lm
Luminous efficiency	140lm/w or option			
Colour Temperature	2700K, 3000K, 4000K, 5000K, 6500K [Option]			
Colour Rendering Index	CRI>80 [CRI>90]			
Colour Deviation	SDCM<3			
Beam Angle	60°, 90°, 120°			
Cut-Off Angle	-			
Tilt Angle	-			
Anti-glare Rating	-			
Service Lifetime	150.000 Hrs L80 B30 Ta25			
Ingress Protection	IP66 IK08			
Operation Voltage	100-277VAC, 50Hz			
Operation Temperature	-40°C ~ 65°C Surface Temperature: Max. 80°C			
Frame	Aluminum			
Net Weight (Trunnion Mount)	8.1±0.3kg [30W-100W]		11.3±0.3kg [120W-240W]	
Surge Protection	10kV line-line, 10kV line-earth			
Lighting control (option)	Dali, 0-10V, Triac, Wireless, Sensor			

Accessories

Wire Guard can be optionally sold separately

Notes

-

