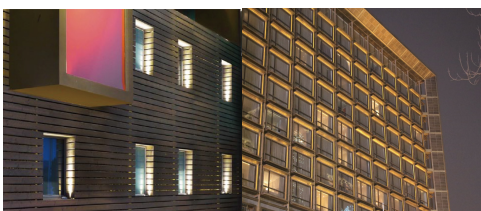
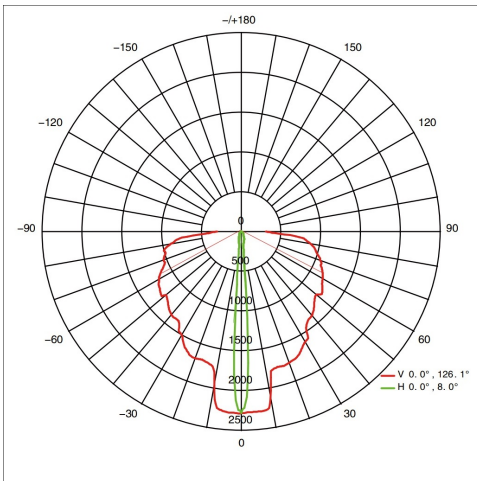
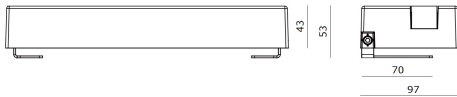
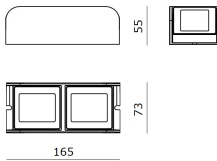
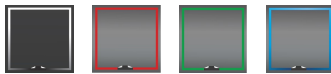




RZ2065OLA



RZ3665OLA



RZ2065OLA

Outline Light With Die-casting Aluminum, Toughened Glass Cover Led 20W 1400lm CRI80 8°*150° 24VDC 55*73*L165mm 50.000h IP65

RZ3665OLB

Outline Light With Die-casting Aluminum, Toughened Glass Cover Led 36W 2520lm CRI80 2°*150° 220VAC 53*97*L280mm 50.000h IP65

Description

Housing: Die-casting Aluminum, Anti-Corrosion, surface with anodizing treatment and optimised for reduced accumulation of dirt, with a high level of weather resistance and UV ray. Durable silicone rubber gasket.

Luminaire head with transparent toughened non-reflective glass, resist the impact and friction, has excellent rainwater clean ability.

Control gear: 2 cable entries. Through-wiring possible. [2-5] 3-pole terminal block.

LED module: High-power LEDs on metal-core PCB. Lens made of optical Polymethyl. Tender and soft light to perfectly present the object without black spot and dark area.

Constant current driver with PWM gray control installed inside, RGB gray level can reach to 65 degree equally, make the dynamic light-dimmer more soft, and the color richer.

DMX512 and Dimming driver can be optionally sold separately, Powerful interface adopts high reliable bus connect, all has the function of automatic addressing.

Protection mode IP65: dust-proof and water jet-proof.



Technical data

Light source	LED SMD	
System Wattage	20W	36W
Luminous flux	1400lm	2520lm
Number of led lamp	8 Led	16 Led
Luminous efficiency	70lm/w or option	
Colour Temperature	2700K, 3000K, 4000K, 6000K, [RGB]	
Colour Rendering Index	CRI>80, [CRI>90]	
Colour Deviation	SDCM<3	
Beam Angle	8°x150°	2°x150°
Rotation Angle	-	
Anti-glare Rating	-	
Service Lifetime	50.000 Hrs L80 B20 Ta35	
Ingress Protection	IP65	
Operation Voltage	24VDC	100-240VAC, 50Hz
Operation Temperature	-30°C ~ 50°C	
Frame	Aluminum	
Finishing	Grey, Matt White, Matt Black or Option	
Lighting control (option)	Dali, 0-10V, Triac, Wireless, DMX512	

Accessories

-

Notes

-