

RZ14DSM

Double Square Surface Mounted Fixed Downlight With Anti-Glare Reflector Led 2*7W
1190lm CRI90 75*145*H95mm 50.000h IP44



RZ18DSM

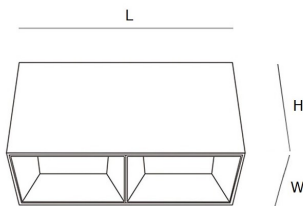
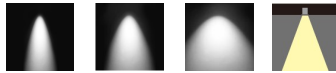
Double Square Surface Mounted Fixed Downlight With Anti-Glare Reflector Led 2*9W
1530lm CRI90 75*145*H95mm 50.000h IP44

RZ24DSM

Double Square Surface Mounted Fixed Downlight With Anti-Glare Reflector Led 2*12W
2040lm CRI90 75*145*H140mm 50.000h IP44

RZ30DSM

Double Square Surface Mounted Fixed Downlight With Anti-Glare Reflector Led 2*15W
2550lm CRI90 95*186*H110mm 50.000h IP44



Model	Dimension (W*L*H)mm	Model	Dimension (W*L*H)mm
RZ14DSM	75*145*95	RZ24DSM	75*145*140
RZ18DSM	75*145*95	RZ30DSM	95*186*110

Description

Designed for shallow ceiling void. With the modularized system, it's easy to use and easy to maintain.

Housing: cast aluminium, powder-coated, connection cable. Ceiling fixture: metal. Includes control gear with Led driver. 2-pole terminal block.

LED module: High-power LEDs on metal-core PCB. Collimating lens made of optical Polymethyl. Tender and soft light to perfectly present the object without black spot and dark area.

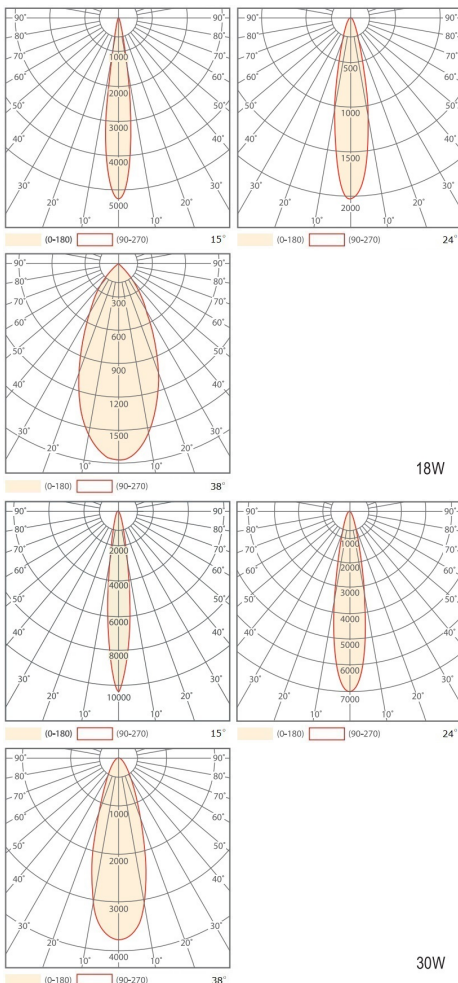
Dimming driver can be optionally sold separately: Dali, 0-10V, Triac, Wireless.

Anti-glare cone with covered mounting detail: Polymethyl, Chrome, Matt White, Matt Black, Customized. High quality optical diffuser reduce LED dazzle light. Cut-off angle 30° with Anti-glare Rating UGR<19.



Technical data

Light source	LED COB
System Wattage	2*7W 2*9W 2*12W 2*15W
Luminous flux	1190lm 1530lm 2040lm 2550lm
Luminous efficiency	85lm/w or option
Colour Temperature	2700K, 3000K, 4000K, 6000K
Colour Rendering Index	CRI>90
Colour Deviation	SDCM<3
Beam Angle	15°, 24°, 38°
Cut-Off Angle	30°
Tilt Angle	-
Anti-glare Rating	UGR<19
Service Lifetime	50.000 Hrs L70 B20 Ta25
Ingress Protection	IP44
Operation Voltage	220-240VAC, 50Hz
Operation Temperature	-20°C ~ 45°C
Frame	Aluminum
Finishing	Matt White, Matt Black
Lighting control (option)	Dali, 0-10V, Triac, Wireless



Accessories

-

Notes

-