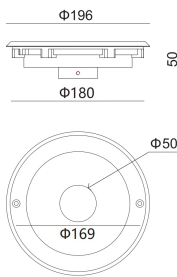
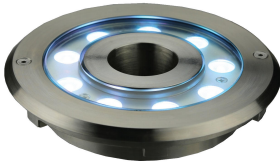


### RZ1668UWF

Underwater Fountain Light Stainless Steel 316 Body, Anti-Corrosion, Transparent Toughened Glass Led 16W 1040lm CRI80 24VDC D196mm 50.000h IP68 With Radial Hole D50mm



#### Description

Recessed luminaire that can be installed in underwater or in the ground. It is designed to use LED lamps, for lighting, fixed optic.

Housing: Stainless Steel 316 Body, Anti-Corrosion, No-Rinse surface treatment. Optimised surface for reduced accumulation of dirt, with a high level of weather resistance. Stainless steel fasteners in grade 316, Durable silicone rubber gasket.

Luminaire head with transparent toughened non-reflective glass, resist the impact and friction.

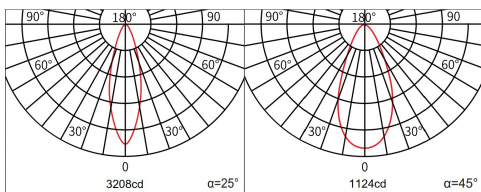
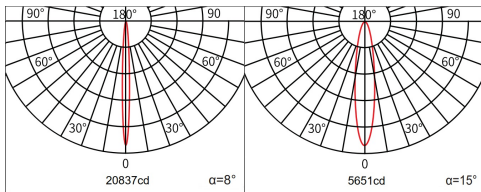
Control gear: Longitudinally watertight cable, 1 cable entries. 2-pole terminal block.

LED module: High-power LEDs on metal-core PCB. Collimating lens made of optical Polymethyl. Tender and soft light to perfectly present the object without black spot and dark area.

Dimming driver can be optionally sold separately: Dali, 0-10V, Triac, Wireless.

Protection mode IP68: Protection against dust ingress, continuous immersion up to 3m deep.

Suitable for walk-over with a maximum static load resistance of 300kg.



#### Technical data

Light source	LED COB
System Wattage	16W
Luminous flux	1040lm
Number of led lamp	9 Led
Luminous efficiency	65lm/w or option
Colour Temperature	2700K, 3000K, 4000K, 6000K, [RGB]
Colour Rendering Index	CRI>80
Colour Deviation	SDCM<3
Beam Angle	8°, 15°, 25°, 45°
Rotation Angle	-
Anti-glare Rating	-
Service Lifetime	50.000 Hrs L80 B20 Ta35
Ingress Protection	IP68
Operation Voltage	24VDC
Operation Temperature	-30°C ~ 50°C
Frame	Stainless Steel 316
Finishing	Non-Color
Lighting control (option)	Dali, 0-10V, Triac, Wireless, DMX512

#### Accessories

-

#### Notes

-

