

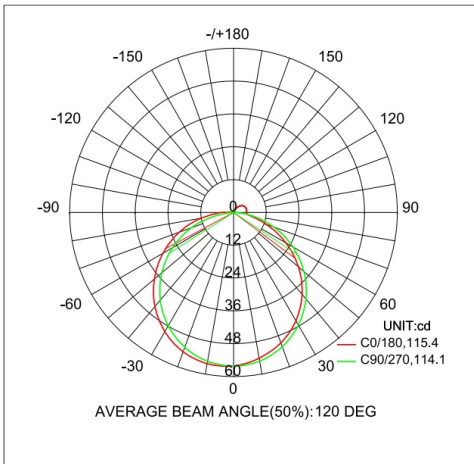
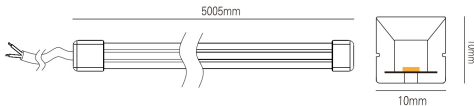
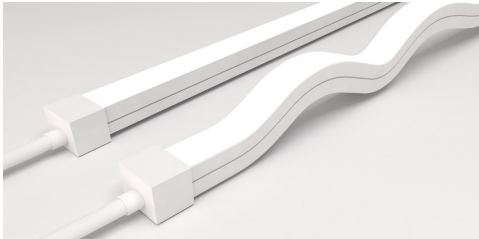


RZ1067TNS

Top Bend Neon Led Strip 10W/m 600lm CRI90 24VDC 50.000h IP67 5M/roll

RZ1567TNS

Top Bend Neon Led Strip 15W/m 900lm CRI90 24VDC 50.000h IP67 5M/roll



Height	Eavg, Emax	Angle:120 deg	Diameter
1m	44.75,158.0lx		300.08cm
2m	11.19,39.51lx		600.16cm
3m	4.972,17.56lx		900.24cm
4m	2.797,9.877lx		1200.32cm
5m	1.790,6.322lx		1500.40cm
6m	1.243,4.390lx		1800.48cm
7m	0.9133,3.225lx		2100.56cm
8m	0.6992,2.469lx		2400.64cm
9m	0.5525,1.951lx		2700.72cm
10m	0.4475,1.580lx		3000.80cm

Description

LED Strip, adopting self-encapsulated LED, highlight SMD, silicone extrusion, flexible FPC. High-energy efficacy achieving up to 100lm/W, 3 steps MacAdam, soft light to perfectly present the object without black spot and dark area.

No need to attach aluminum profile for heat sink, various of connection accessories can be optionally sold separately.

Customized length available up to 5m per roll.

Change atmosphere by tuning the color temperature (2000K to 6000K) and dimming control systems are for choice.

Short cuttable unit suitable for furniture lighting, and for unpredictable requirements on site, applying to indoor and outdoor lighting, furniture, advertisement and other supporting usages.

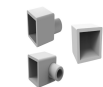
Protections grades of IP67 and IP68 can be achieved by adopting silicone integrated extrusion, nano coating and other protection processes.



Technical data

Light source	LED SMD	
System Wattage	10W/m	15W/m
Luminous flux	600lm	900lm
Luminous efficiency	60lm/w or option	
Colour Temperature	2700K, 3000K, 4000K, 6000K	
Colour Rendering Index	CRI>90 [CRI95]	
Colour Deviation	SDCM<3	
Beam Angle	120°	
Max.Length	5m	
Cut length	50mm	
Led/m	120pcs	
Anti-glare Rating	-	
Service Lifetime	50.000 Hrs L70 B20 Ta25	
Ingress Protection	IP67	Option
Operation Voltage	24VDC	
Operation Temperature	-20°C ~ 45°C	
Lighting control (option)	Dali, 0-10V, Triac, Wireless	

Accessories



RZ-TB01A



RZ-TB01C



RZ-TB01D

Notes

-